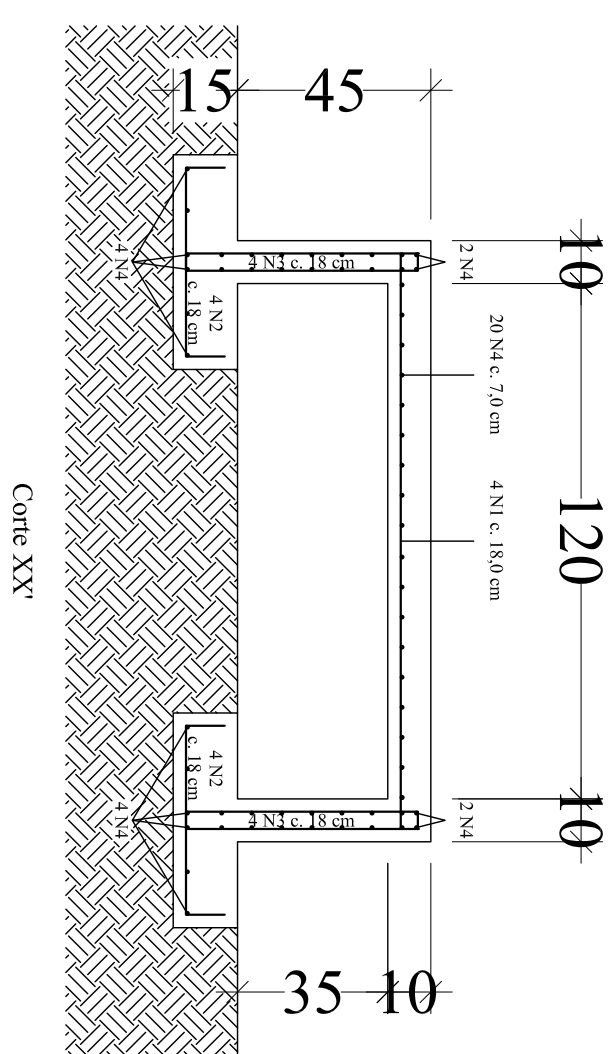
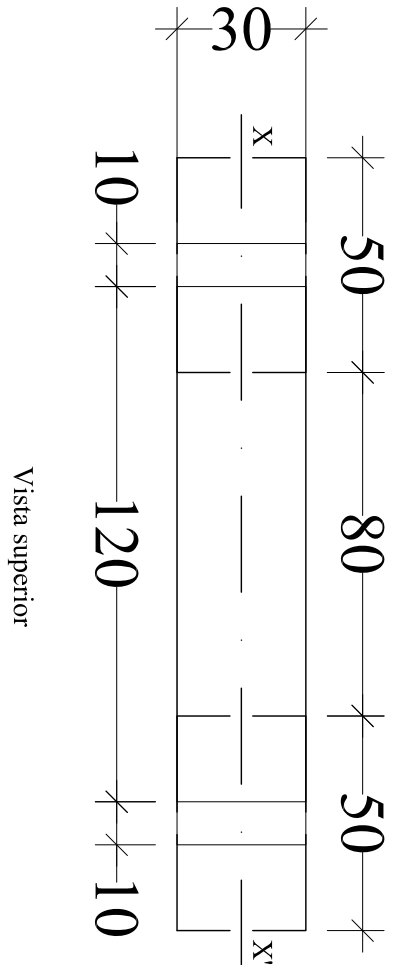
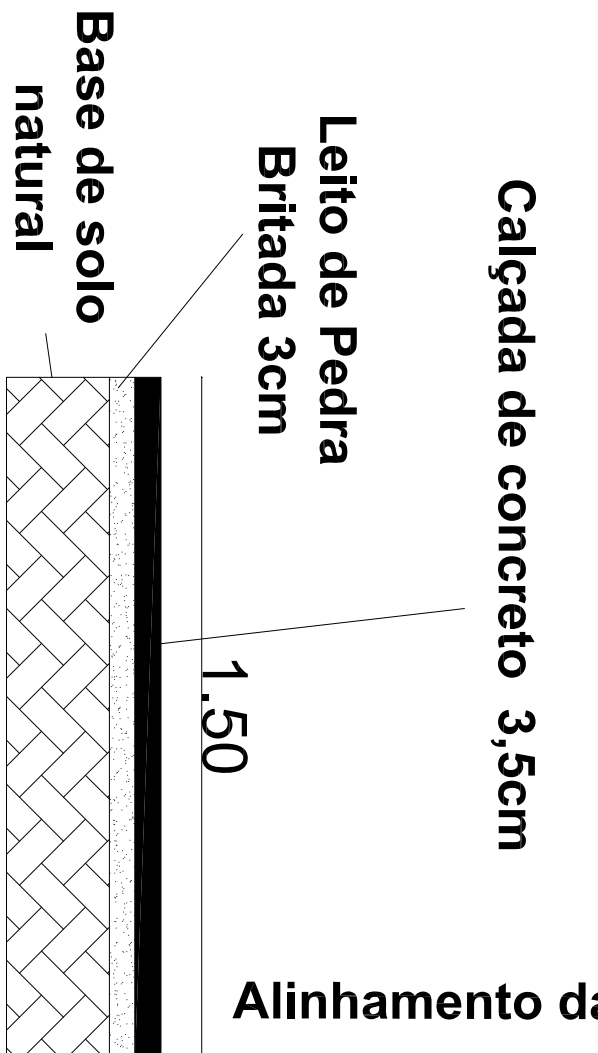


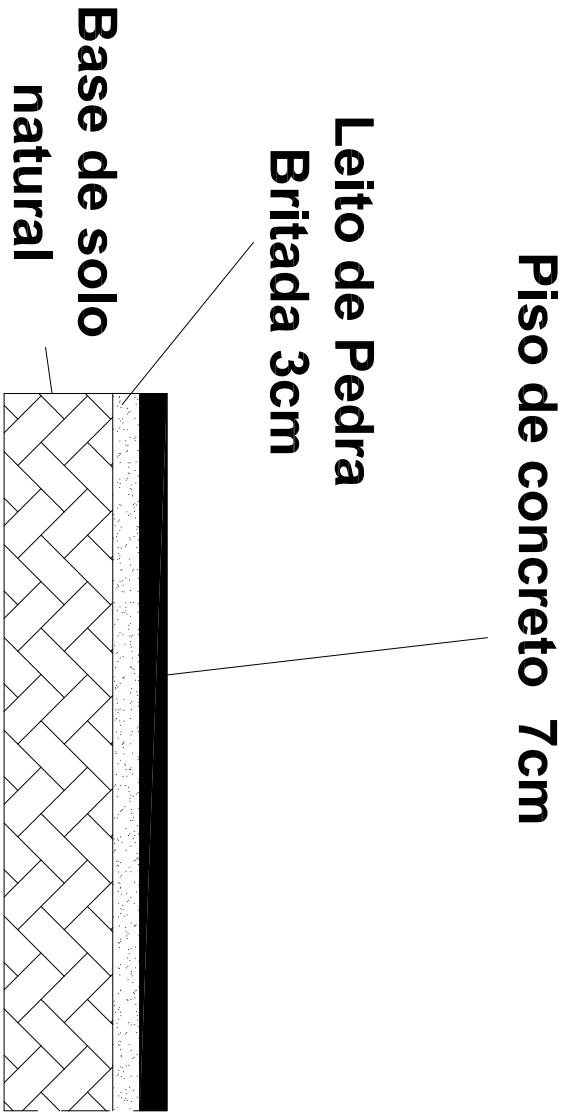
Bancos de Concreto



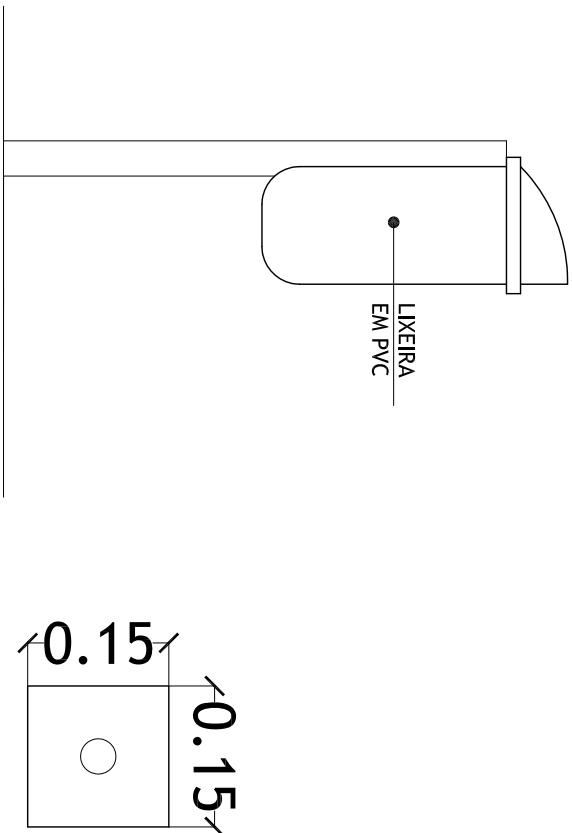
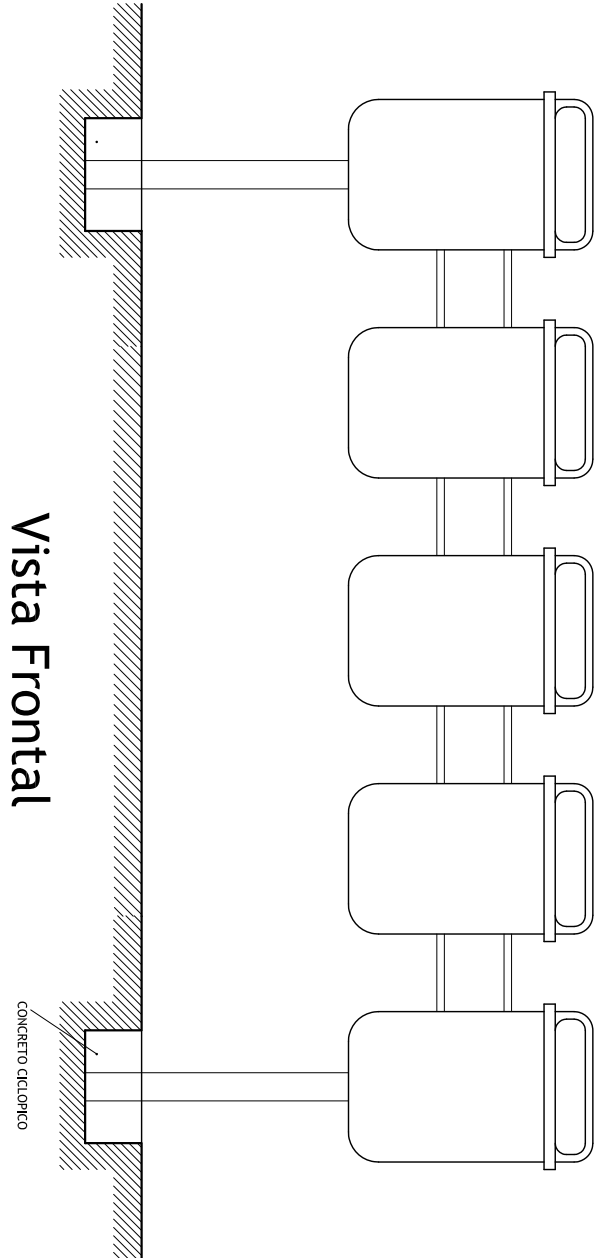
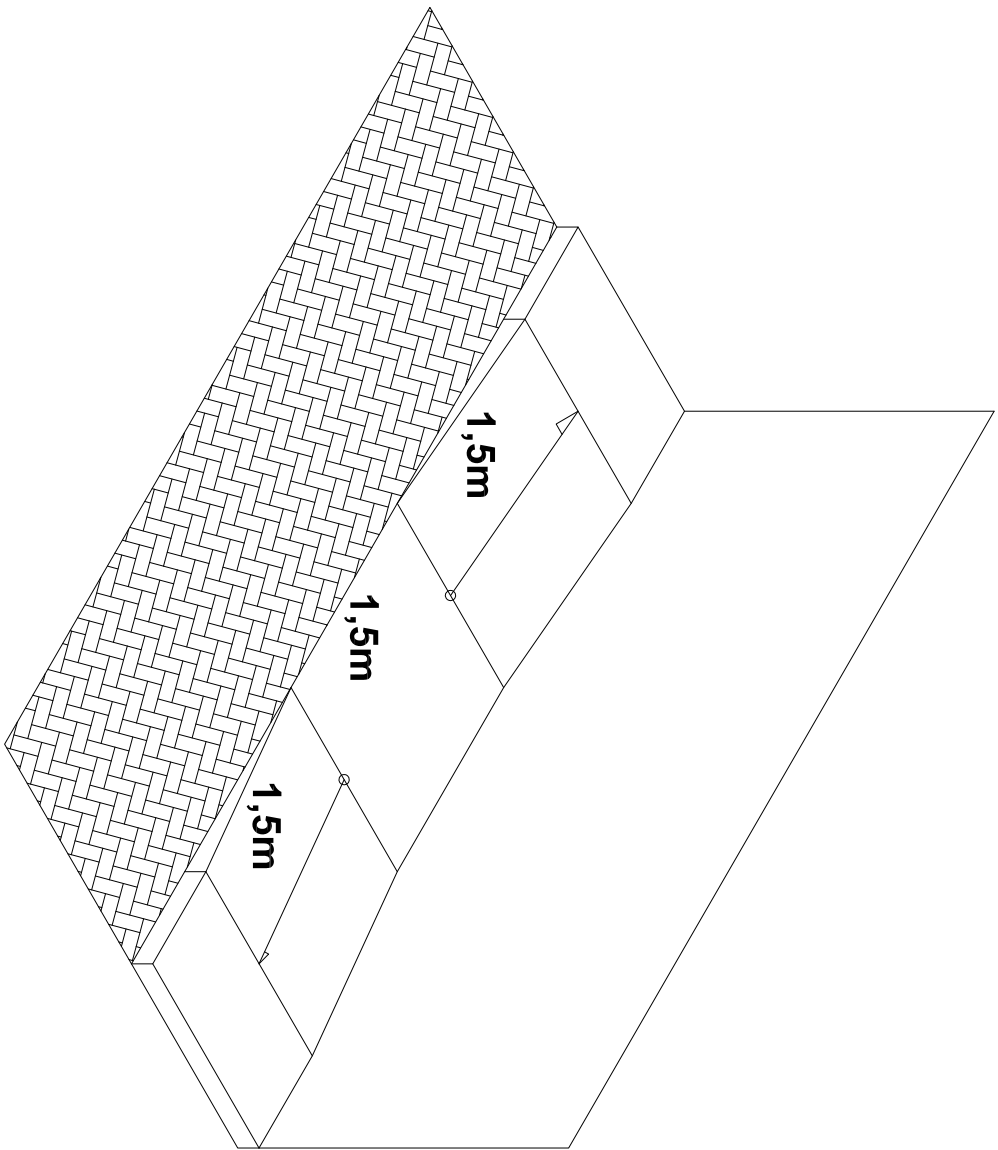
Corte Transversal do Passeio de Concreto e Praça Seca




Corte Transversal da Pista de Skate



Detalhe da Rampa



Volume das Lixeiras - 52litros

			
PREFEITURA MUNICIPAL DO RIO GRANDE			
UNIDADE GESTORA DE PROJETOS - UGP			
RIO GRANDE UMA VISÃO DE FUTURO			
Obra:			
PARQUE ESPORTIVO BANDEIRANTES			
AV. BANDEIRANTES			
RESP. PROJETO:		TRECHO:	
ENGº ATAUALPA DA SILVA AGOSTINHO - CREA/RS 160757		UN	
DESENHO: MATHEUS FREITAS	ESCALA: 1:100	DATA: SETEMBRO/2011	PRANCHA: 16
ESPECIFICAÇÃO:		DETALHAMENTO DOS EQUIPAMENTOS	
		ARTº: 604/206	